



Newsletter APRIL 2018

BioScientific aims to keep our researchers and customers updated with news from our various suppliers with our Newsletter – We are constantly sourcing top quality products for your research. Contact our office for that “HARD TO FIND” product! info@biosci.com.au

VLVbio is running an offer – **20% Discount Apoptense ELISA* kits.**



VLVbio AB Swedish biotechnology company

M30 Apoptosense® ELISA (Prod. No 10011)

The M30 Apoptosense® ELISA measures the concentration of caspase-cleaved keratin 18 in human plasma, serum or cell culture supernatants, reflecting the amount of apoptosis.

The assay is based on the unique M30 antibody, which recognizes a neo-epitope of keratin 18 formed after caspase cleavage. The assay can be combined with the M65® ELISA for the analysis of cell death mode (necrosis or apoptosis). The M30 Apoptosense® ELISA is CE marked as a medical device for *in vitro* diagnostic use. All reagents are provided in a convenient ready-to-use format.

1 new article 2017- in which the authors analysed several studies that had used the M30 Apoptosense for the diagnosis/detection of NASH. In total 1406 patients, from 15 studies, were analysed for M30 Apoptosense.

1 new article 2018 the study to identify the best available biomarkers for Drug-Induced Liver Injury (DILI).

Links available on request

info@biosci.com.au

for further information, pricing and specification sheets.

* Discount until further notice from supplier

*mention discount from NEWSLETTER on PO



Quality Immunological Adjuvants

TiterMax® Gold - A New and Improved Research Adjuvant –

TiterMax® Classic - Potent Vaccine Adjuvants for Clinical Trials –

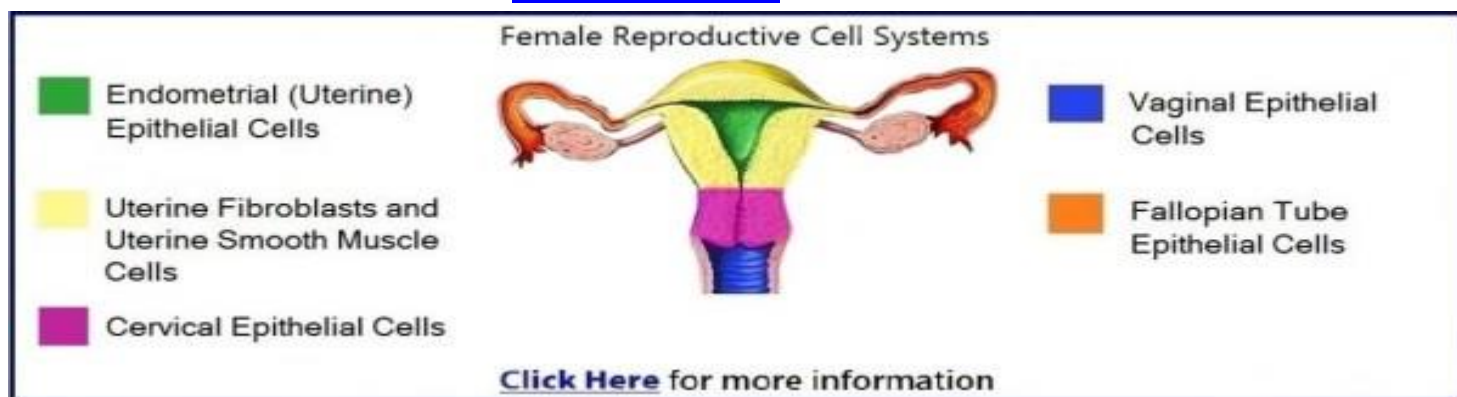
For pricing and further information, please email - info@biosci.com.au

Introducing the newest addition to Lifeline's Normal Human Female Reproductive Cell Systems

"Human Fallopian Tube Epithelial Cells (HFTEC)"

These cells, when grown in Lifeline's **ReproLife™ Medium**, provide an ideal serum-free culture model of the Fallopian Tube Epithelium. They can be used to study infectious diseases and cancer of the Fallopian Tubes, and to study the cellular physiology of the reproductive tract.

Contact info@biosci.com.au for further information



High Yield DNA Selection

- [Better performance and specificity](#)
- [Supplied for diagnostic genomic sequencing](#)
- [Fast magnetic response](#)

- [Precise selection](#)

MagVigen DNA EASY Select Kit (Cat:K61001-EASY): Pricing - sales@biosci.com.au



cyclic di-AMP

The Messenger You Can't Ignore

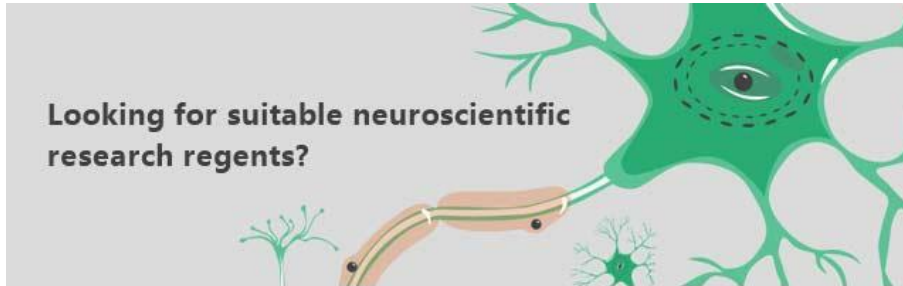
Research on **bacterial second messengers** has recently experienced **tremendous progress**, and **cyclic di-AMP (c-di-AMP)** is one of the rising stars.^[1] **c-di-AMP** is essential for the growth of several **human bacterial pathogens** - e.g. *Staphylococcus aureus* or *Borrelia burgdorferi* - by regulating **DNA damage repair**, **potassium homeostasis**, **cell wall** and **membrane synthesis** and **sporulation**.^[2] To solve the numerous riddles relating to c-di-AMP metabolism and function (**Scheme 1**)^[2], synthetic c-di-AMP serves as:

analytical standard^[3]

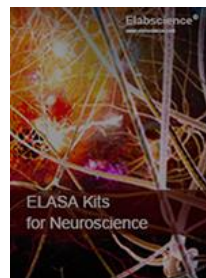
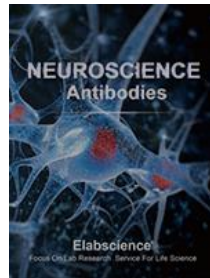
substrate or ligand for enzyme kinetics^[4,5], protein crystallography^[5,6], selectivity^[7] and binding assays^[7,8]

stimulator of the innate immune response^[9]

c-di-AMP is now available from Jena Bioscience **NU-954S** and **NU-954L** . For other cyclic or linear dinucleotide pairs, please inquire! info@biosci.com.au



Neuroscience is the study of the nervous system, which refers to wide ranging areas of ion channels, synaptic transmission, neural development, sensory and cognitive physiology and neural circuits. Systematical study on neurological disorders will provide insights into the exciting world of the brain, spinal cord, neurons and the senses.



https://www.elabscience.com/documents/neuroscience-antibodies.pdf?utm_source=edm&utm_medium=email&utm_campaign=Neuroscience

https://www.elabscience.com/documents/elisa-kits-for-neuroscience.pdf?utm_source=edm&utm_medium=email&utm_campaign=Neuroscience

Pricing contact BIOSCIENTIFIC PTY LTD – sales@biosci.com.au



REPROCELL is a brand and name of the parent company of this website. REPROCELL has products and services to support iPS cell reprogramming, stem cell cultivation, cell differentiation. The products displayed below belong to the original REPROCELL brand

Alvetex®

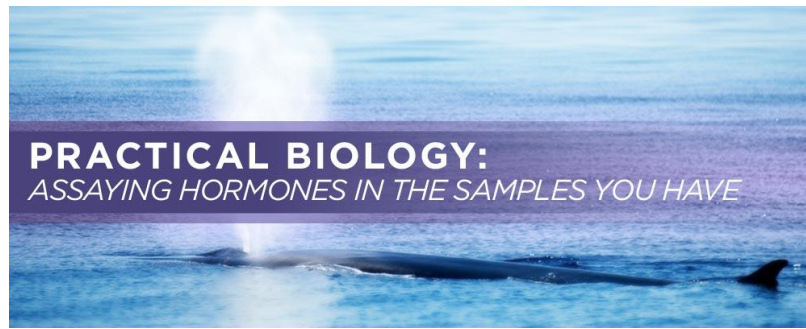
3D cell culture plate - Achieve genuine 3D cell culture, simply and routinely— Alvetex® Scaffold Highly porous polystyrene scaffold designed for 3D cell culture—for various sizes visit - www.reprocell.com

Stemgent

the first company to launch a mRNA reprogramming kit for making iPSCs. Today, the organization is armed with broader capabilities and expertise, and has recently developed a third generation reprogramming technology

Visit www.reprocell.com for complete listings of brands and products

Pricing - info@biosci.com.au



| | |
|---|---|
| <p>An important consideration in the study of hormones is their variability in response to internal and external stimuli which can provide insight into a variety of biological processes of interest to conservation and management. This essential variability is, of course, what makes these molecules valuable to study, but it adds interesting complications to the sample collection. Traditional blood samples can be difficult if not impossible to collect from large, free-range, terrestrial or aquatic mammals. Furthermore, even if you can catch your subjects, the very act of collecting invasive samples like blood can stress the animal and change the hormone profile you're trying to determine.</p> | <p>Working creatively to get the information you need from the samples you have access to can be a central part of experimental design. Critical to these types of experiments are assays that are sensitive enough to allow for the measurement of target hormones in a wide variety of matrices, preferably with very small sample sizes. Arbor Assays kits are designed with these needs in mind. We are always working collaboratively so that our customers can get the most from their small volume or low concentration samples.</p> |
| <p>Fortunately, many hormones can be reliably measured in non-invasive sample types such as faeces, urine, saliva, mucus, hair, nails, baleen, feathers etc. Studies have shown¹⁻³ that many hormones and messenger molecules retain the same relative concentration trends in these sorts of non-invasive samples as are observed in blood. In other words, if a treatment or environmental stressor raises the level of target molecule in the blood, the amount measured in faeces or saliva or respiratory vapors etc. will increase proportionally. Additionally, collection and extraction protocols for many different sample matrices have been verified and published, allowing researchers access to data they might not otherwise be able to collect.</p> | <p style="text-align: center;">Related kits:</p> <p>Cortisol EIA K003-H: Progesterone EIA K025-H</p> <p>Estradiol EIA K030-H: Testosterone EIA K032-H</p> <p>Aldosterone EIA K052-H</p> <p>Contact sales@biosci.com.au for current pricing.</p> |



1. Online:

Go to www.biosci.com.au - We accept Visa, Mastercard and American Express.



2. By Email:

Email our Sales Department at sales@biosci.com.au After your order is entered, an order confirmation will be sent via email.



3. By Phone:

Call **1 300 246 724 (BIOSCI) Monday - Friday 8.30 am-5pm**



4. By Fax:

Fax your Purchase Order to 02 9524 3100. After your order is entered, an order confirmation will be sent by return fax.

ALL Enquiries info@biosci.com.au